



DE VALK
YACHT BROKERS



P 50 SY "LUISE"



DE VALK
YACHT BROKERS

P 50 SY "LUISE"

BROKER'S COMMENTS

"P50 SY "Luise" is a true modern classic sailing yacht Custom built by the German shipyard Dick in Kiel to a designed of the Swiss naval architect buro Plot Yacht Concept. The P50 SY Luise has electric powered Reckman furling sailsmainsail as well as Andersen electric winches for ease of handling. A powerfull main engine and bowthruster for safe manouvering in tight marinas and a spacious decksalon with ample outside view at seating hight for comfort and enjoyment. She appears in original, close to new condition and an viewing is highly recomended."

Hans Visser

SPECIFICATIONS

Dimensions	15,45 x 3,98 x 2,20 (m)	Builder	Yachtwerft Dick
Built	2005	Cabins	2
Material	Wood Epoxy	Berths	6
Engine(s)	1 x Perkins P65/15 diesel	Hp/Kw	65 (hp), 47,84 (kw)
Asking price	EUR 398.000 (vat: paid)	Lying	at sales office

CONTACT

Sales office	De Valk Hindeloopen	Telephone	+31 514 52 40 00
Address	Oosterstrand 1 8713 JS Hindeloopen The Netherlands	Fax	+31 (0)514 52 40 09
		E-mail	hindeloopen@devalk.nl

DISCLAIMER

These particulars are given in good faith as supplied but cannot be guaranteed and cannot be used for contracts.



P 50 SY "LUISE"

GENERAL

Model	P 50 SY
Type	sailing yacht
LOA (m)	15,45
LWL (m)	11,44
Beam (m)	3,98
Draft (m)	2,20
Air draft (m)	20,00
Year built	2005
Builder	Yachtwerft Dick
Country	Germany
Designer	Plot Yacht Concept
Displacement (t)	18,15
CE norm	A
Hull material	wood epoxy
Hull colour	black
Keel type	fin keel with bulb
Superstructure material	wood epoxy
Superstructure (mm)	Detailed building description available
Rubbing strake	wood Teak
Deck material	wood epoxy Wood epoxy structure with 12mm teak
Antifouling (year)	2023, International VC Offshore
Dorades	Stainless steel
Fuel tank (litre)	stainless steel 143L+178L+118L (439L in total)
Level indicator (fuel tank)	yes
Freshwater tank (litre)	stainless steel 510L
Blackwater tank (litre)	stainless steel one for each toilet
Blackwater tank extraction	deck extraction + uw line
Greywater tank (litre)	yes
Wheel steering	cable steering



ACCOMMODATION

Cabins	2
Berths	6
Interior	mahogany
Deck saloon	yes
Doghouse	yes
Saloon	yes
Heating	diesel ducted hot air Webasto
Opening door to cockpit	yes
Galley	yes
Cooker	calor gas 4 flamed ENO gas stove
Oven	yes
Fridge	yes
Freezer	yes
Hot water system	yes
Water pressure system	yes
Owners cabin	double bed
Toilet	separate 2 toilets, Dometic
Toilet system	electric
Shower	separate
Guest cabin 1	double bed + single bed
Bathroom	yes
Toilet	separate Dometic electric
Toilet system	electric
Wash basin	yes
Guest cabin 2	bunk bed 1 single pilot berth

MACHINERY

No of engines	1
----------------------	---



P 50 SY "LUISE"

Make	Perkins
Type	P65/15
HP	65
kW	47.84
Fuel	diesel
Year of overhaul	2018, 440h since
Maximum speed (kn)	8,5
Cruising speed (kn)	7
Engine cooling system	freshwater heat exchanger
Drive	shaft
Shaft seal	yes
Engine controls	bowden cable
Bowthruster	Lewmar
Propeller type	reversible
Propeller blades	3
Propeller shaft material	stainless steel
Manual bilge pump	yes
Electric bilge pump	yes
Electrical installation	12 / 24V
Batteries	6 x AGM exide Dual 140Ah (2018)
Start battery	2 x new in 2020
Battery monitor	yes
Battery charger	Mastervolt Chargers
Battery charger/inverter	yes
Shorepower	yes

NAVIGATION

Compass	yes
Depth sounder	Raymarine
Log	Raymarine
Windset	Raymarine



VHF	Sailor C4951 WP
Autopilot	Raymarine Smartpilot
GPS	MCR FX312 XC
Radar/GPS/plotter	Raymarine AXIOM PRO 12 S, Hybrid Touch in Cockpit
Navigation lights	yes
Loudhailer	yes

EQUIPMENT

Sprayhood	yes
Fixed hardtop	yes
Cockpit cover	yes
Boarding ladder	yes
Anchor	Bügel anchor
Anchor chain	Stainless steel
Windlass	hydraulic Lewmar
Sea railing	yes
Grab rail (superstructure)	yes
Railing side opening gates	yes
Pushpit	yes
Pulpit	yes
Fenders	yes
Mooring lines	yes
Radio-cd player	yes
Speakers in cabin	yes
Clock - barometer	yes
Fire extinguisher	yes

RIGGING

Rigging	cutter Reckmann
----------------	-----------------



Standing rigging	wire revisited 2017
Brand mast	Reckmann
Material mast	aluminium
Spreaders	2
Keel stepped mast	yes
Mainsail	Hood, in mast furled
Stoway mast	yes
Jib	selftacker on cutter stay
Genoa I	2021
Genoa furler	yes
A-symmetric spi	with hose
Self tacking jib installation	yes
Backstay adjuster	hydraulic Navtec
Boomvang	yes
Primary sheet winch	Andersen 58ST
Secondary sheet winch	Andersen 52ST
Genoa sheetwinches	Andersen 46ST
Halyard winches	2 x Andersen 46ST
Spi-pole	aluminium



P 50 SY "LUISE"



P 50 SY "LUISE"



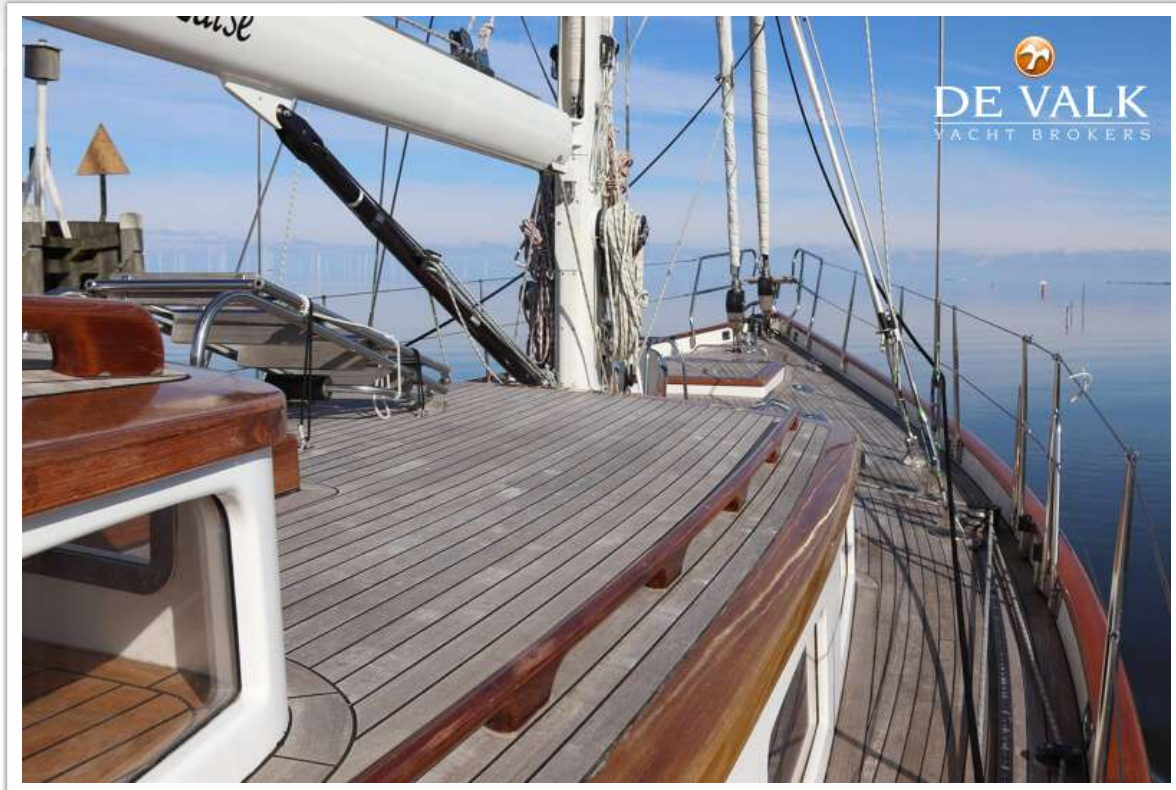
P 50 SY "LUISE"



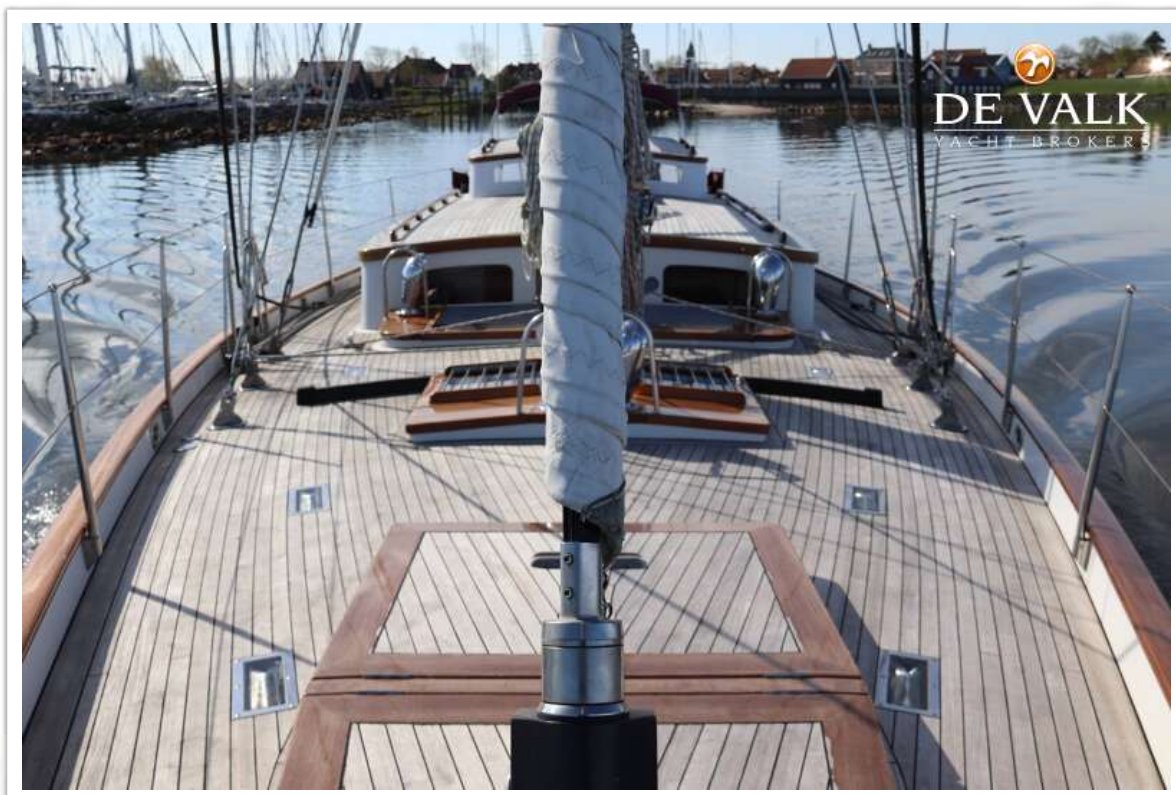
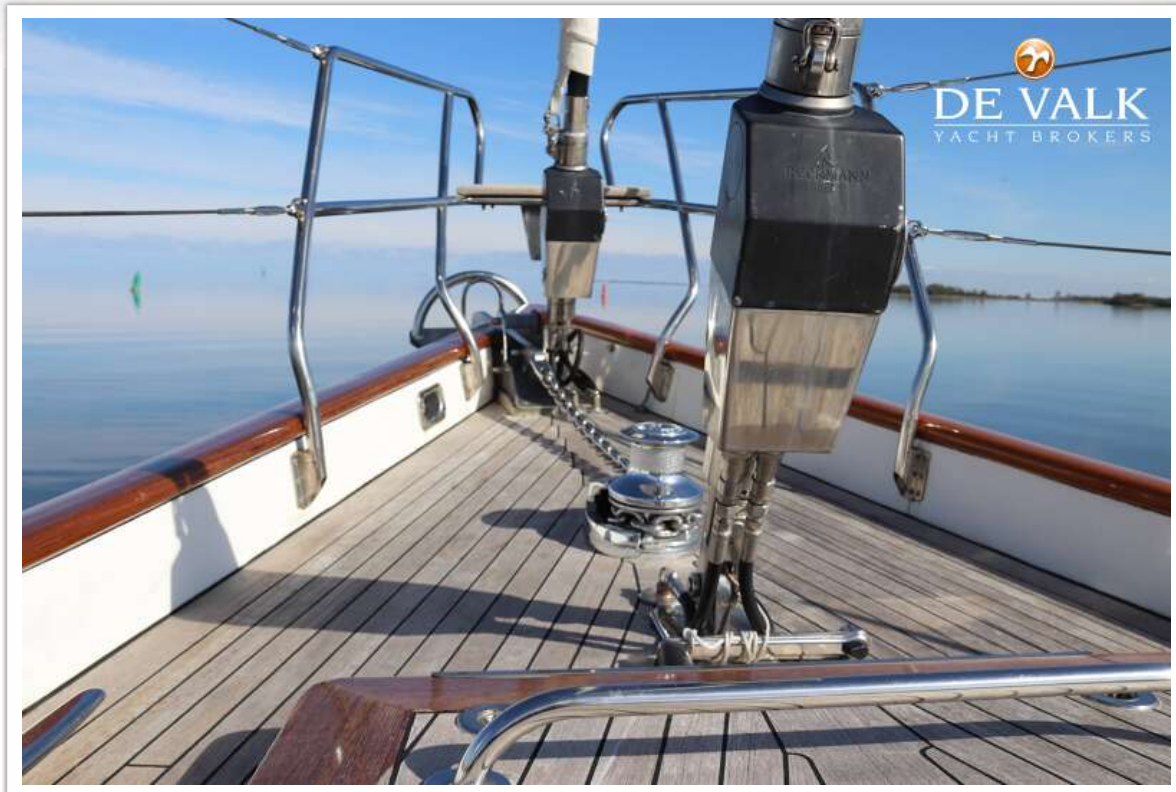
P 50 SY "LUISE"



P 50 SY "LUISE"



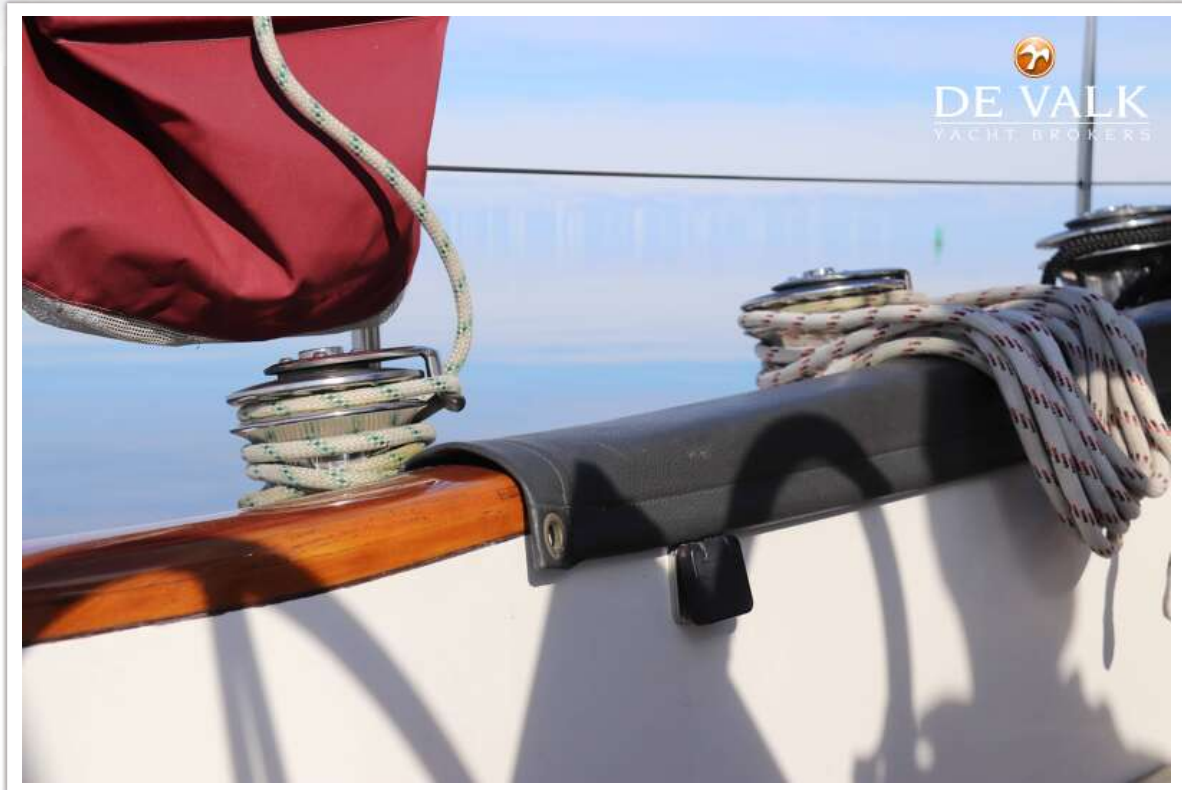
P 50 SY "LUISE"



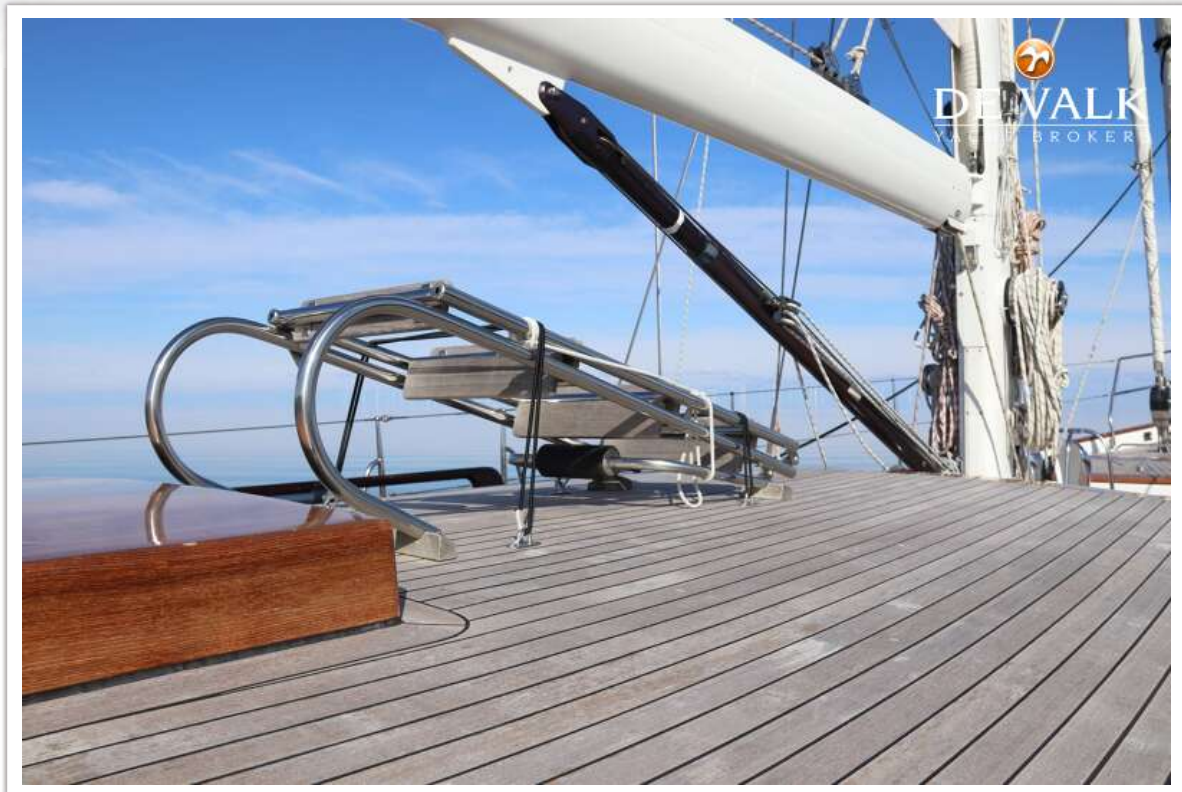
P 50 SY "LUISE"



P 50 SY "LUISE"



P 50 SY "LUISE"



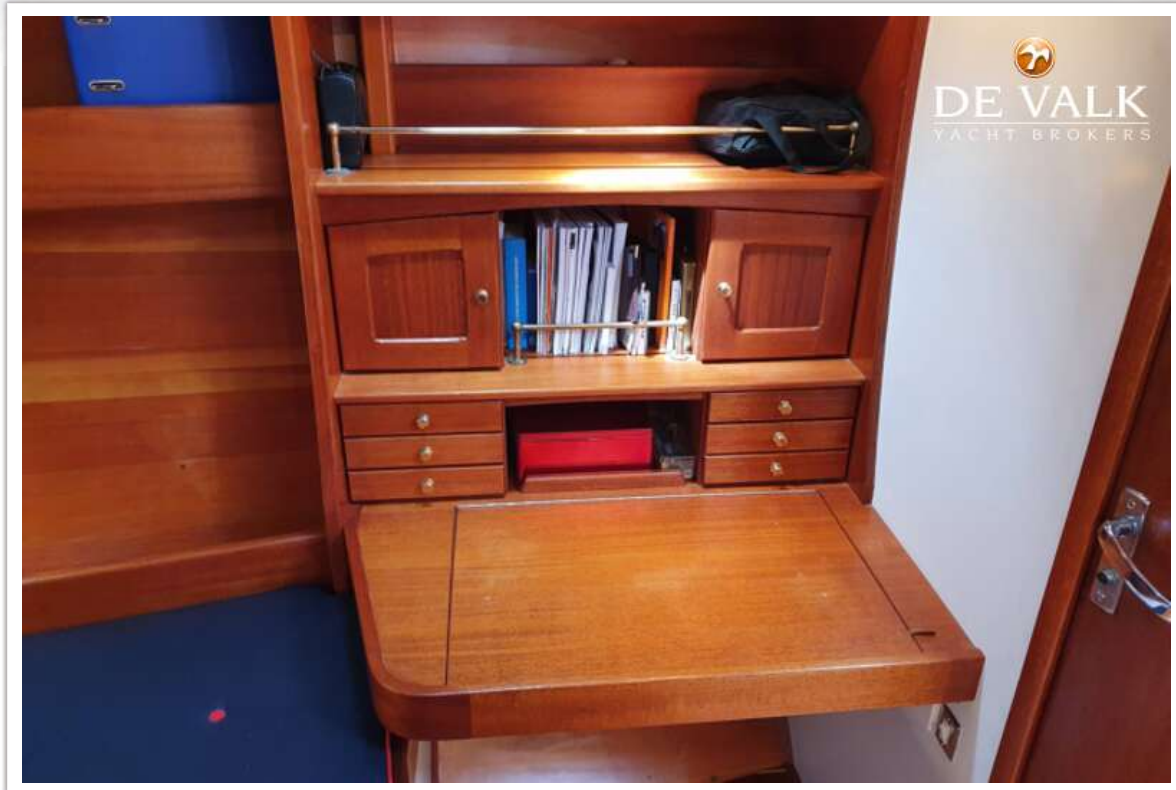
P 50 SY "LUISE"



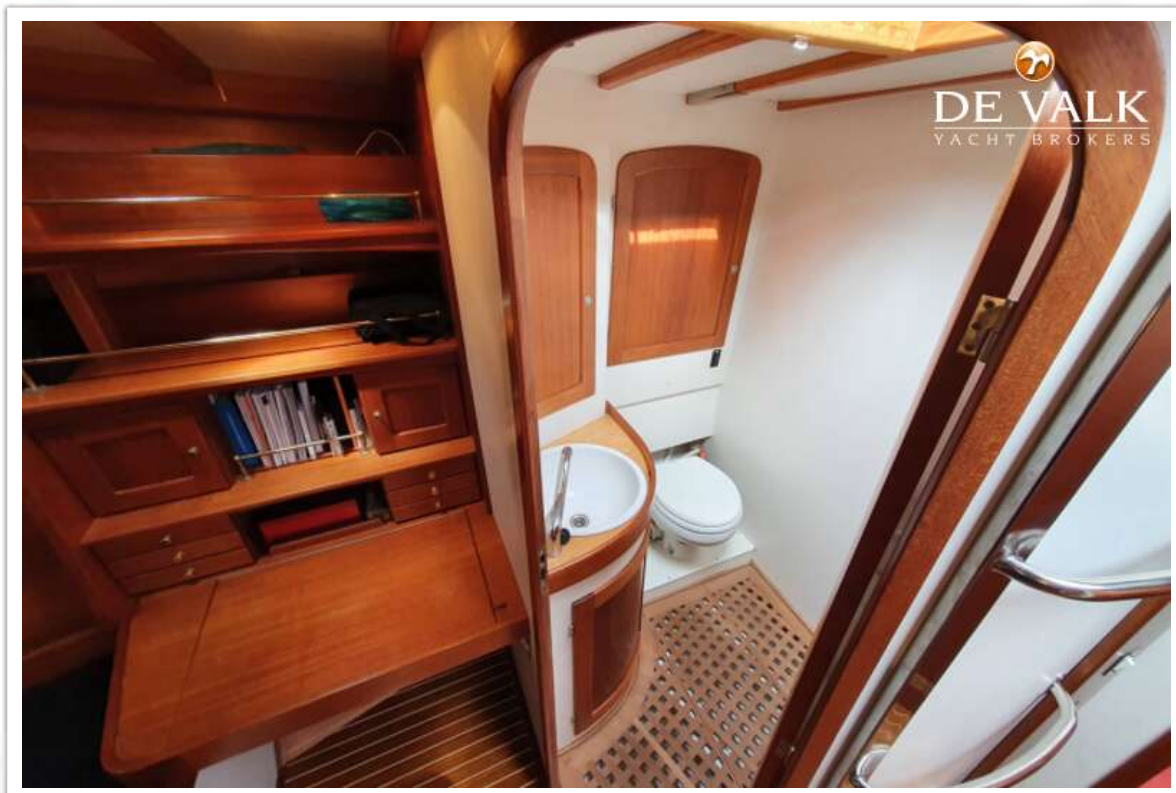
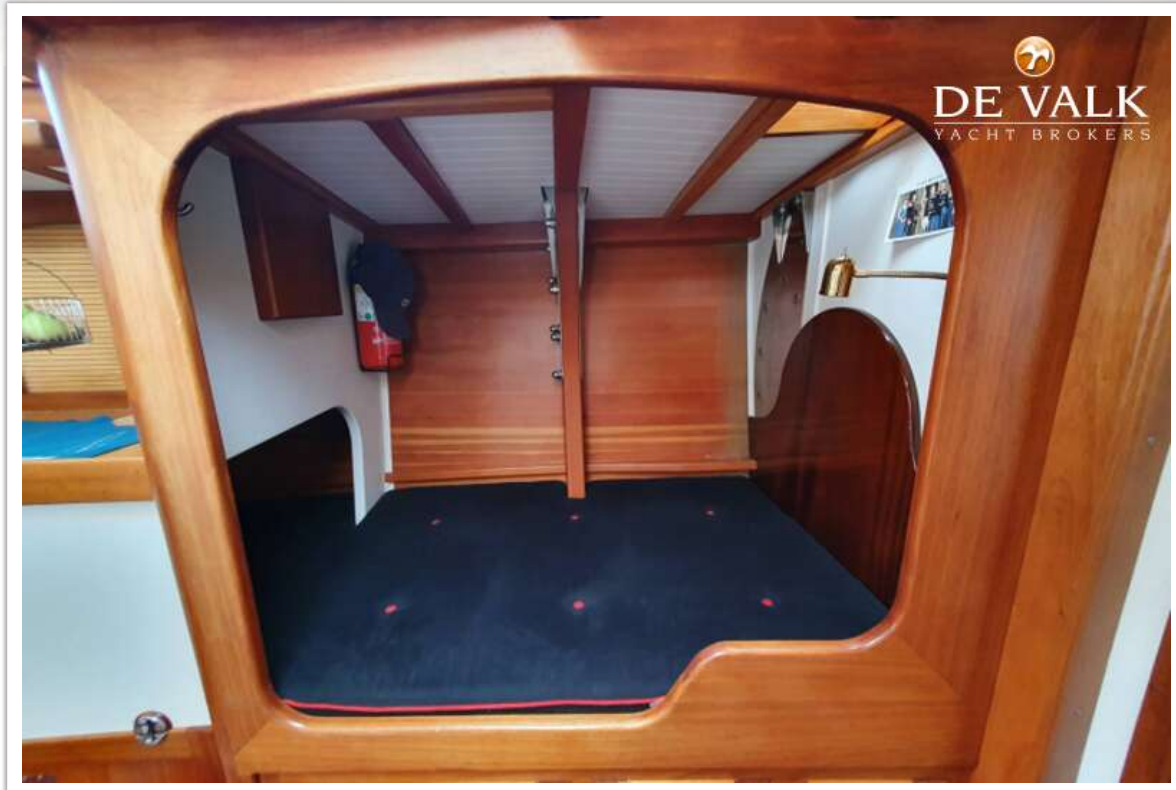
P 50 SY "LUISE"



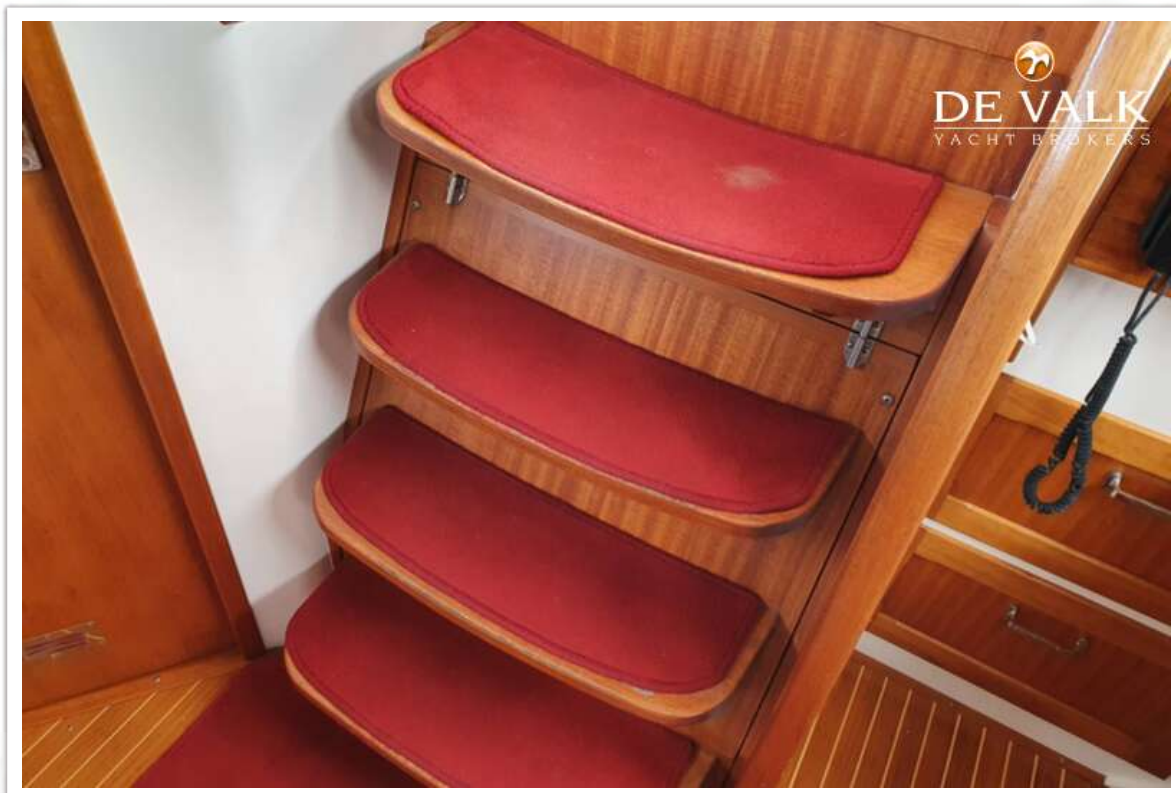
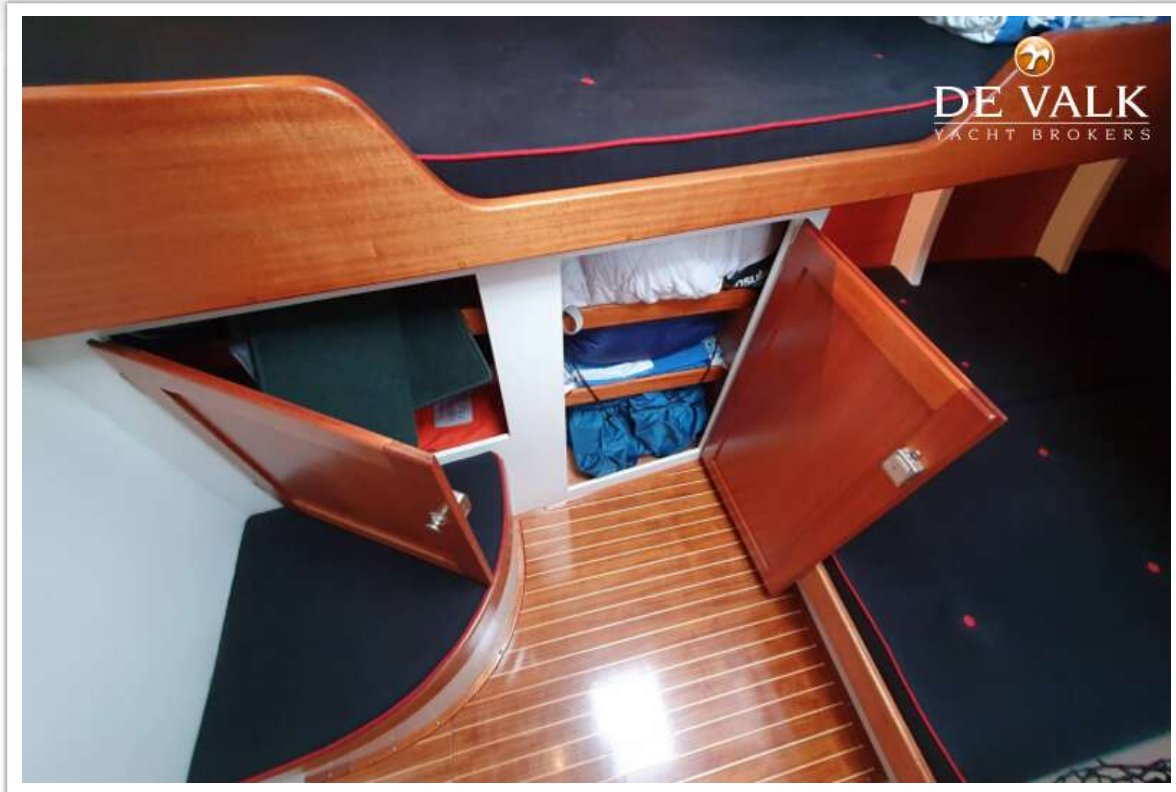
P 50 SY "LUISE"



P 50 SY "LUISE"



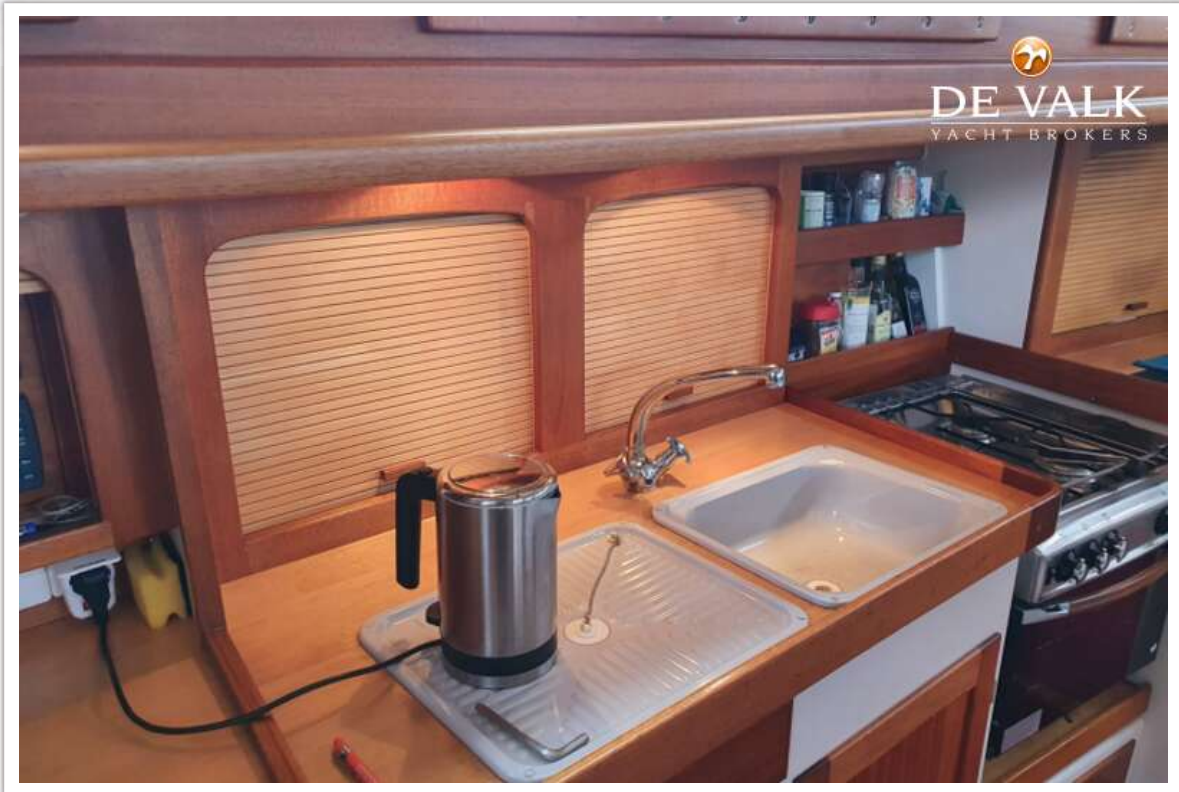
P 50 SY "LUISE"



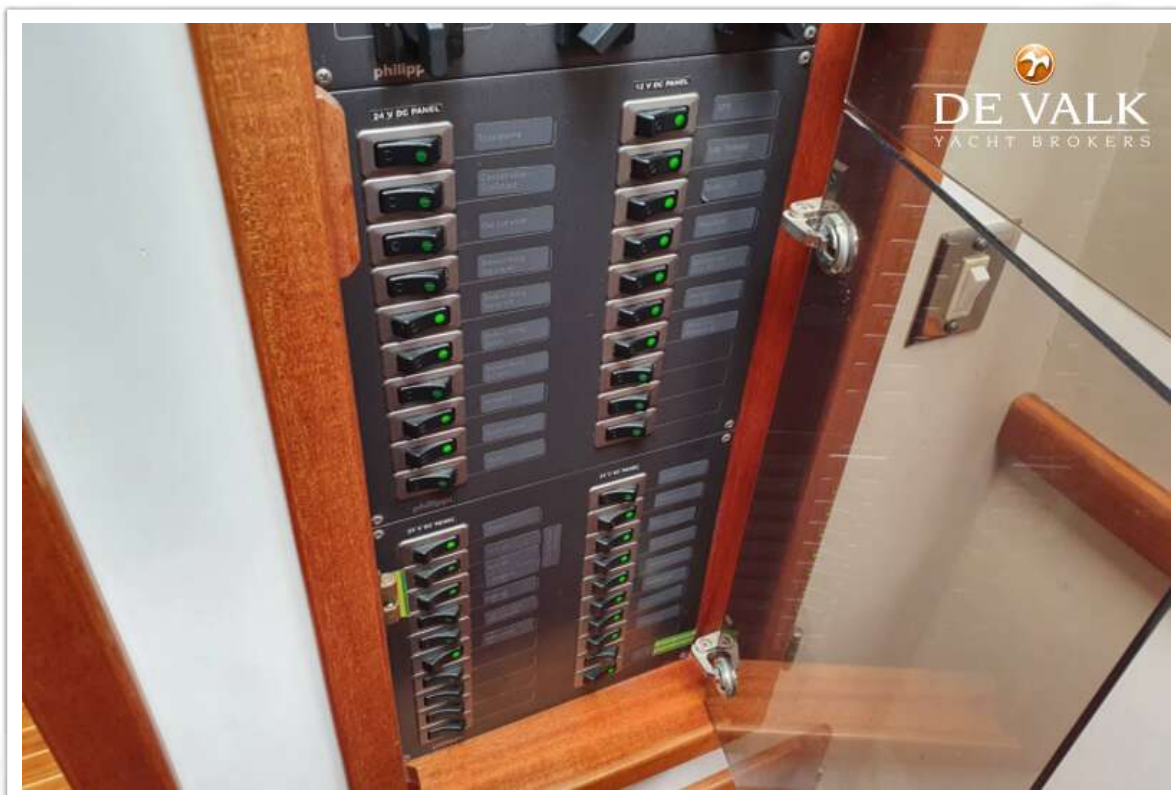
P 50 SY "LUISE"



P 50 SY "LUISE"



P 50 SY "LUISE"



P 50 SY "LUISE"

